

updated 12-1-10

4 - PE
3800

In Service/Under Construction
Est # 2007004875
Proj # 021.051.2624.010768
oke02758
8/13/2007
Install 2130' of 2" PE & 3800' of 4" PE

2800

2440

2900

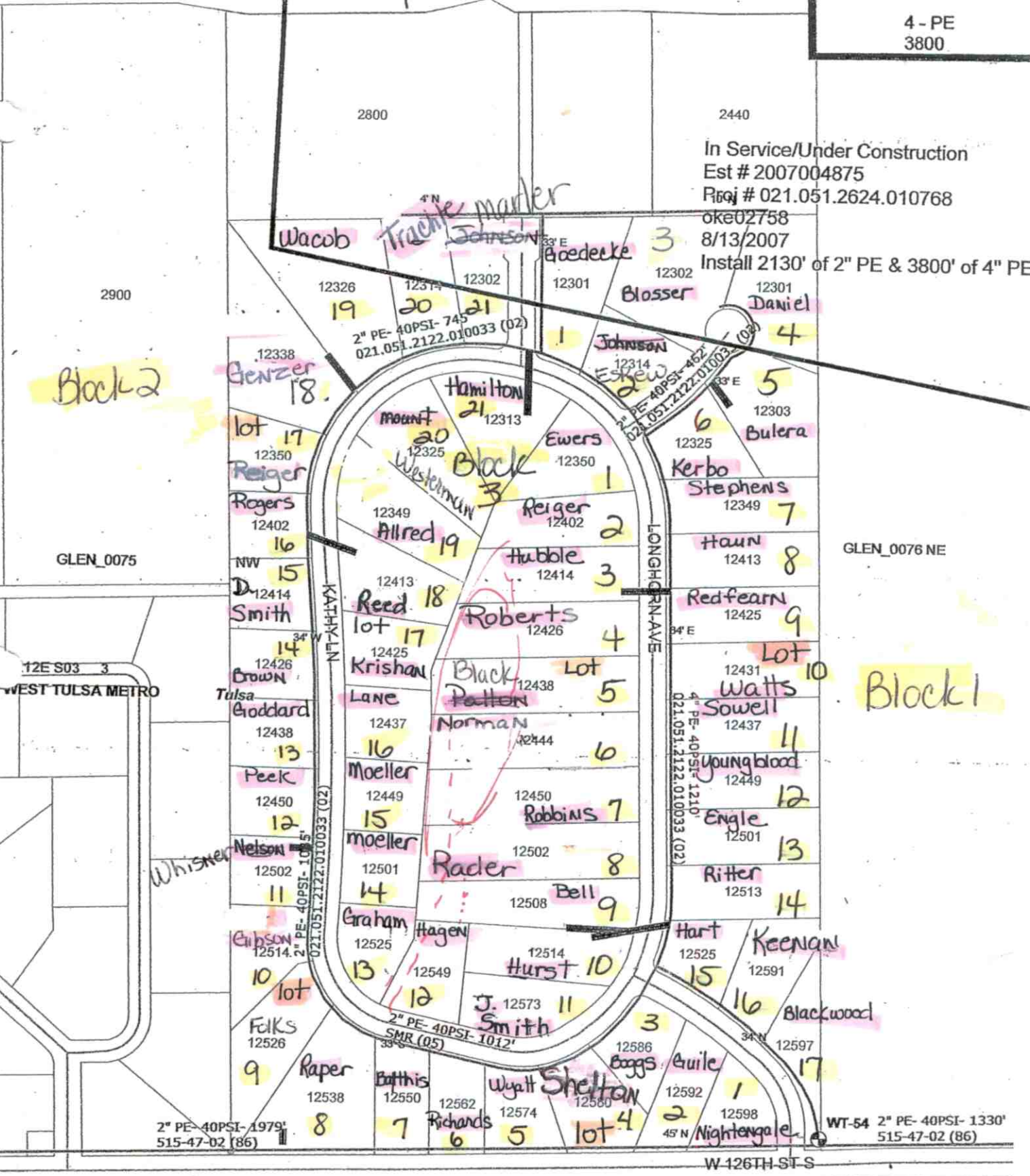
Block 2

GLEN_0075

12E S03 3
WEST TULSA METRO

GLEN_0076 NE

Block 1



2" PE-40PSI-1979'
515-47-02 (86)

WT-54 2" PE-40PSI-1330'
515-47-02 (86)

GLEN_0044

GLEN_0045